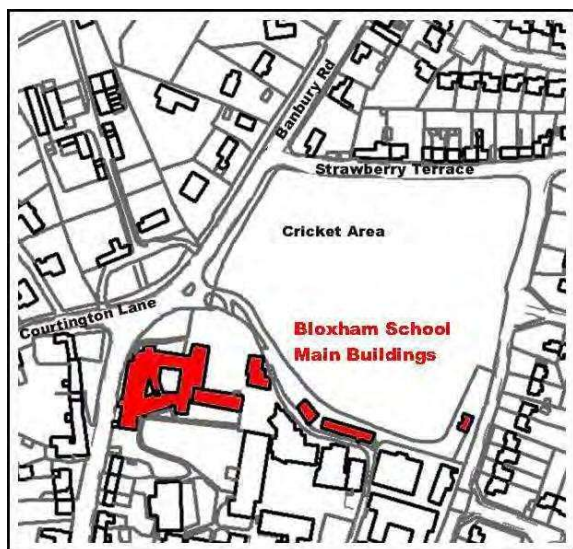


APPENDIX B: KEY STREETSCENES AND VIEWS

Key views 1: The area fronting the Bloxham School main buildings

The CPRE Consultation comment states, 'Few other villages have such a statement of arrival.' It has dominated the northern approach for around 150 years and regularly appears on school marketing materials. It is an area significant for its beauty and holds an important place in the history of the village. With the possible exception of the parish church, its visual impact is unsurpassed. We would expect any future development would show great sensitivity to preserving the overall visual impact.

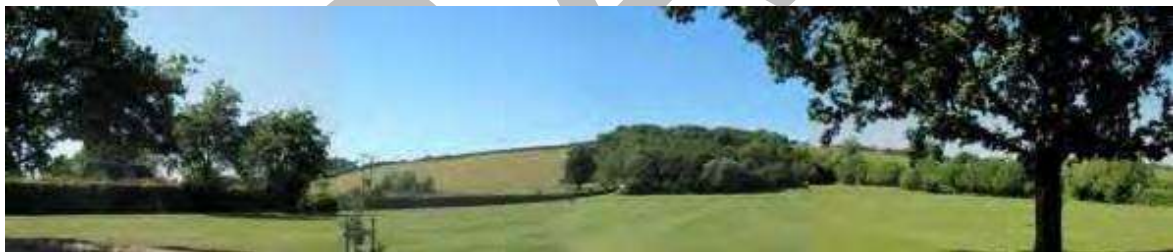
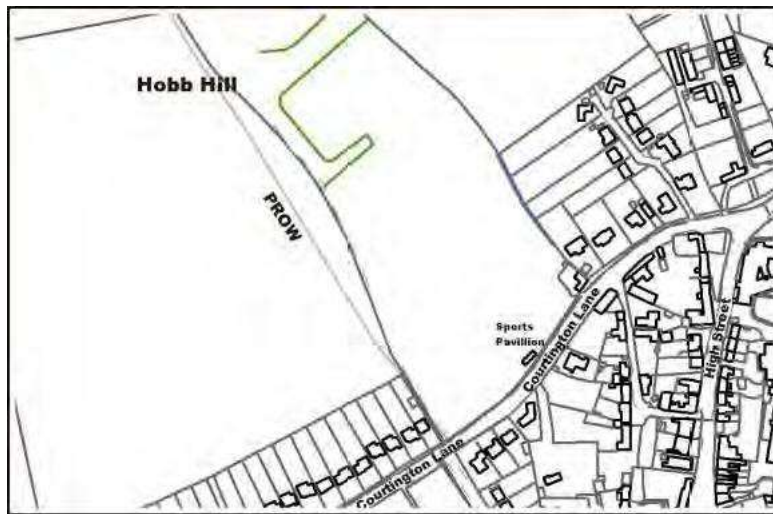


Key views 2: Hobb Hill

From Courtington Lane, within the very heart of the village, are views across Bloxham School rugby grounds to open countryside up onto Hobb Hill. Again, we would expect any future development to show great sensitivity to preserving the overall visual impact.

From the public footpath a public right of way runs along the far side of the hedge shown in the left of the previous panoramic view. It is regularly used because of its convenient

central location and because the footpath is the only place offering such stunning panoramic views of the village in its verdant setting. We seek to preserve these views for present and future residents.



Key views and street scenes 3: The Red Lion Garden

The construction of the A361 in 1815 led to loss of the village green. The area remaining consisted of a piece of land hosting the war memorial and what became the

current Red Lion garden which has long been used for open-air community activities such as outdoor plays, village fetes and festivals.

The pub is already registered as a community asset and the pub garden is the subject of a current heritage status bid. This whole compact triangle between the Red Lion pub, the 17C Elephant and Castle coaching inn and the 16th century Joiners Arms is an area of highly distinctive character. We do not seek to inhibit appropriate improvements to the Pub or its outbuildings but will not support development on the Red Lion garden.

